

SK ATOMIK

64.8M ANCHOR HANDLING TOWING SUPPLY VESSEL
 80 T BOLLARD PULL | DIESEL-ELECTRIC | DP2 | FIFI 1

VESSEL PARTICULARS

Class	ABS ✕ A1 AH FFV1 OSR-C1 TOW Ⓢ Supply-HNLS Offshore Support Vessel ✕ AMS ✕ DPS-2 UWILD SPS BP 80.422T MLC-ACCOM
Flag	ROC
P.O.R	Kaohsiung
Year Built	2017
Builder	Nam Cheong Dockyard, Malaysia
IMO	9721528
Official Number	016660
Call Sign	BR4775

DIMENSION

L.O.A.	64.80 m
Beam	16.00 m
Depth	6.80 m
Draft (max)	5.47 m
GRT	2332
NRT	699

CARGO CAPACITIES

Deadweight	1980 Tonnes
Deck Cargo	650 Tonnes
Deck Loading	7.5 Tonnes/m ²
Deck Area	420 m ²
Fresh Water	397 m ³
Drill/Bal Water	641 m ³
Fuel Oil	580 m ³
Base Oil	123 m ³
Mud	411 m ³
Brine	411 m ³
Dry Bulk	172 m ³
Recovery Oil	411 m ³

ACCOMMODATION

1 Man cabin	6x 1 (6)
2 Men Cabin	8x 2 (16)
4 Men cabin	7x 4 (28)
Total	50 berths
Hospital	1 berth

PERFORMANCE

Speed	13.0 knots
Bollard Pull	80.422 tonnes



PROPULSION & POWER PLANT

Propellers	2x 2400KW Azimuth Thrusters
Bow Thruster	2x 560KW, 10T Thrust each
Propulsion Motor	2x 2400KW 1200 rpm, 690V3Ph60Hz
Main Generator	4x 1425KW, 690V3Ph60Hz
Emergency Generator	1x 200KW, 440V3Ph60Hz

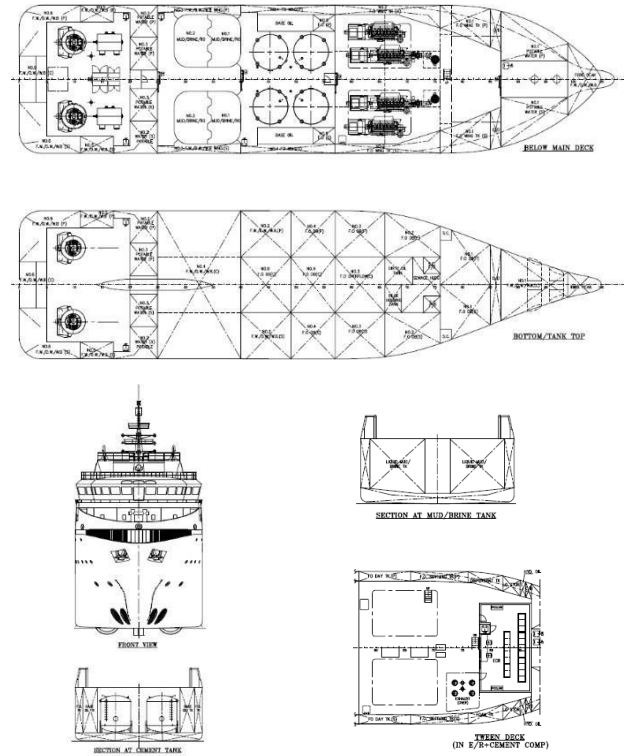
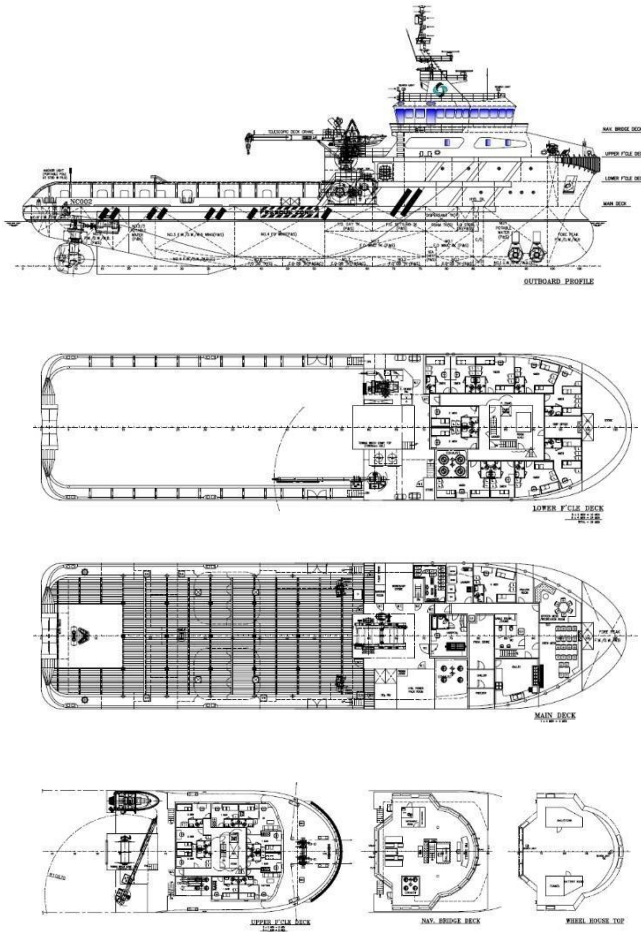
DECK MACHINERY

Tugger winch	2x 10 Tonnes SWL
Capstan	2x 10 Tonnes SWL
Provision Crane	1x 5/7.5 Tonnes SWL @ 15/10 m radius Telescopic type
AHT Winches	1x Electro-Hydraulic double drum AH/T Winch Line pull: 150 Tonnes Brake: 250 Tonnes Drum cap: 1250m x 60mm dia. Wire
Storage Reel	1x 3300m x 60mm dia. Wire
Shark Jaw	1x 200 Tonnes SWL
Towing Pins	1x 115 Tonnes SWL
Stern Roller	1x 4m(L) x 1.8m(dia.) 250Tonnes SWL

CARGO HANDLING CAPACITY

Fresh Water	1x 100 m ³ /hr @ 80 m head
Drill Water	1x 100 m ³ /hr @ 80 m head
Fuel Oil	2x 100 m ³ /hr @ 80 m head
Base Oil	1x 75 m ³ /hr @ 80 m head
Mud	2x 75 m ³ /hr @ 240 m head
Brine	2x 75 m ³ /hr @ 240 m head
Dry Bulk	2x 13m ³ /min @ 5.6 bar
Water Maker	1x 10 m ³ /day

SK ATOMIK | 64.8M ANCHOR HANDLING TOWING SUPPLY VESSEL



THIS DRAWING AND THE INFORMATION CONTAINED HEREIN ARE SUPPLIED ON THE UNDERSTANDING THAT THEY ARE THE EXCLUSIVE PROPERTY OF NC DESIGN PTE LTD. THEY MUST NOT BE USED OR REPRODUCED IN WHOLE OR IN PART WITHOUT PERMISSION IN WRITING.

NAVIGATION EQUIPMENT

Radars, Magnetic Compass, Gyro Compasses, DGPSs, AIS Autopilot, Echo Sounder, Speed Log, Navtex, Weather Fax SSAS, BNWAS

COMMUNICATION EQUIPMENT

GMDSS A1+A2+A3, VSAT

FIRE-FIGHTING EQUIPMENT

External FiFi Pump: 2x 1700 m³/hr @ 130 MLC
Monitor: 1x 1200 m³/hr (water/foam)
Monitor: 1x 1200 m³/hr (water)

Oil Dispersant 2x 6m spray booms with nozzles

SAFETY EQUIPMENT

Rescue Boat 1x 6 men Fast Rescue Boat
118 KW in board engine, waterjet

SKOM SDN BHD (1182610-K)

B-03-B-17-1, Menara 3A, No.3, Jalan Bangsar, KL Eco City, 59200 Kuala Lumpur, Malaysia

Tel : +603-2280 6777 | Fax: +603-2201 7778 | www.skom.com.my

*Disclaimer : All information provide here is accurate at the time of printing and may be subjected to change without prior notice. While every reasonable care has been taken in preparing this document, SKOM Sdn Bhd. Will not be held responsible for any inaccuracies.